

FAG

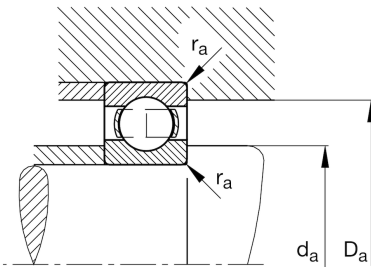
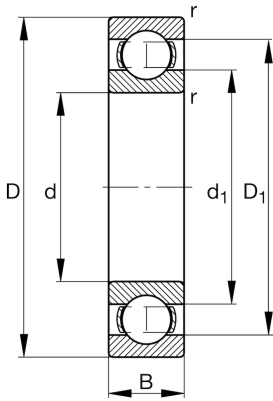
6336-G

Deep groove ball bearing

Schaeffler ID:
\${ctx.productData.sapMaterialNumber}

Deep groove ball bearing 63...G, single row, generator bearing, steel sheet metal cage

Technical information

**Main Dimensions & Performance Data**

d	180 mm	Bore diameter
D	380 mm	Outside diameter
B	75 mm	Width
C_r	350.000 N	Basic dynamic load rating, radial
C_{0r}	465.000 N	Basic static load rating, radial
C_{ur}	14.500 N	Fatigue load limit, radial
n_G	2.390 1/min	Limiting speed
n_{gr}	2.400 1/min	Reference speed
	38,2 kg	Weight

Dimensions

r_{min}	4 mm	Minimum chamfer dimension
D_1	311,15 mm	Shoulder diameter outer ring
d_1	250 mm	Shoulder diameter inner ring

Mounting dimensions

$d_{a min}$	197 mm	Minimum diameter shaft shoulder
$D_{a max}$	363 mm	Maximum diameter of housing shoulder
$r_{a max}$	3 mm	Maximum fillet radius

Calculation factors

f_0	19,8	Calculation factor
-------	------	--------------------

Temperature range

T_{min}	-30 °C	Operating temperature min.
T_{max}	200 °C	Operating temperature max.